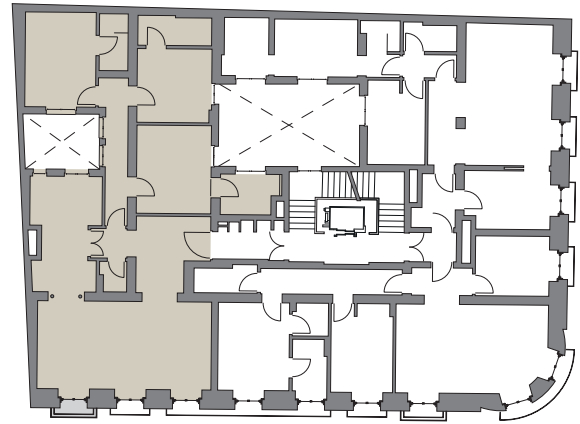




VIVIENDA HOUSING **A** PLANTAS 1-4 FLOORS 1-4



Calle San Marcos

Calle del Barquillo

SUPERFICIE CONSTRUIDA	169,28m <sup>2</sup>	BUILT AREA
SUP. CONSTRUIDA	190,38m <sup>2</sup>	BUILT AREA
CON ESPACIOS COMUNES		WITH COMMON SPACES
SUPERFICIE ÚTIL	131,87m <sup>2</sup>	USABLE SURFACE

