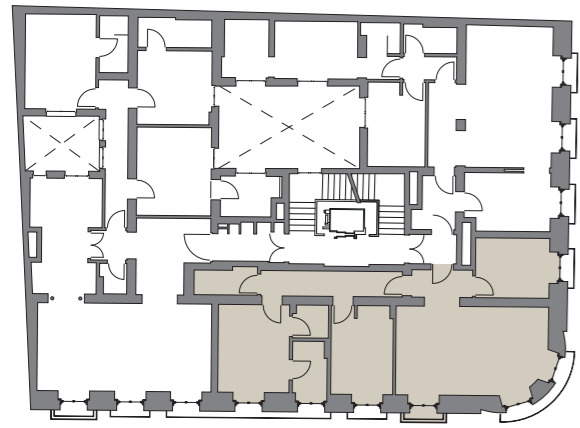




VIVIENDA HOUSING **B** PLANTAS 1-4 FLOORS 1-4



Calle del Barquillo

Calle San Marcos

SUPERFICIE CONSTRUIDA	120,83m ²	BUILT AREA
SUP. CONSTRUIDA CON ESPACIOS COMUNES	135,89m ²	BUILT AREA WITH COMMON SPACES
SUPERFICIE ÚTIL	92,21m ²	USABLE SURFACE

