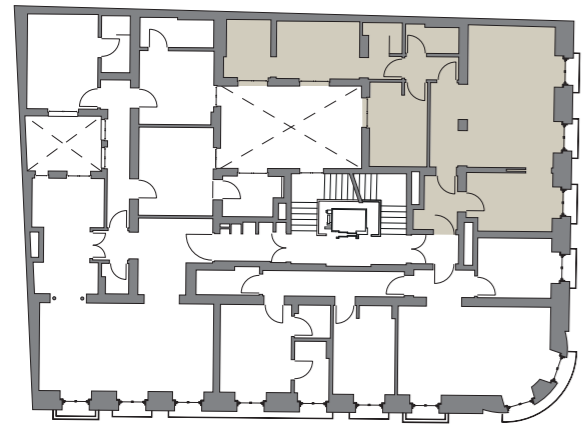




VIVIENDA HOUSING **C** PLANTAS 1-4
FLOORS 1-4



Calle del Barquillo

Calle San Marcos

SUPERFICIE CONSTRUIDA	115,16m ²	BUILT AREA
SUP. CONSTRUIDA CON ESPACIOS COMUNES	129,51m ²	BUILT AREA WITH COMMON SPACES
SUPERFICIE ÚTIL	90,01m ²	USABLE SURFACE

